

Demographics

POPULATION

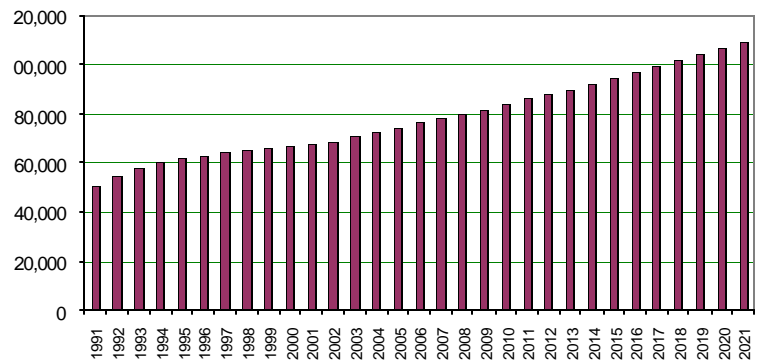
British Columbia has traditionally been one of the fastest growing provinces in Canada. This is largely due to interprovincial migration as Easterners seek the milder climate of the Pacific Coast and its desirable standard of living. BC has also grown significantly as Asians seek BC's lower cost of living and a new way of life. This provincial growth has subsided somewhat over the past several years.

However, Chilliwack is continuing to attract new residents at a record pace. An attractive lifestyle, gorgeous scenery, and low cost home prices — at about half of those in western areas of the Greater Vancouver/Lower Mainland Economic Region — are causing the centre of population for the Lower Mainland to shift eastward away from Vancouver and toward Chilliwack.

Population Growth

As of 2005, the estimated population of Chilliwack is 74,420 with an average annual growth rate of about 2%. With steady growth, projected population is expected to reach 83,946 in 2010 and 108,823 in 2021.

Population Estimates (1992-2021)



Regional Population

There are 260,247 people living within a 30-minute commute of Chilliwack (including Abbotsford, Mission and Chilliwack). There are about 865,360 within 90 km (to Surrey and Pitt Meadows); and about 2.5 million within 130 km (including Vancouver).

Besides Vancouver, major US cities such as Seattle and Bellingham (Washington State) are also within a

Regional Population	
Chilliwack	72,645
Within 40 km	241,000
Within 90 km	832,427
Within 130 km	2.5 million
Within 200 km	5.0 million

reasonable distance from Chilliwack. And in the Lower Mainland, there are three border crossings to ensure easy access to these US centres. If the American communities are also included, there are over 5 million people living within 200 km of Chilliwack.

Population by Age-Sex

The percentage of males and females living in BC has been roughly equal since the 1960s — and it’s no different in Chilliwack (see chart). The population’s also older: less than 37% of British Columbians are under the age of thirty. This trend is similar in Chilliwack as about 61% of the population is over 29 years old.

The increase in adult population implies a downsizing of the average household. However, changes are minimal. In Chilliwack, the average household size remains at about 3 persons, and that number is unlikely to change much over the next 10 years.

Year	Population	Change	Households	Change
1991	50,888	5.82%	19,044	2.618
1992	54,121	6.35%	20,216	2.626
1993	57,387	6.03%	21,393	2.635
1994	60,710	5.79%	22,561	2.643
1995	61,819	1.83%	22,872	2.651
1996	63,068	2.02%	23,233	2.659
1997	64,426	2.15%	23,766	2.663
1998	65,209	1.22%	24,084	2.667
1999	65,963	1.16%	24,096	2.671
2000	66,818	1.30%	24,398	2.669
2001	67,846	1.54%	24,767	2.667
2002	68,896	1.55%	25,258	2.665
2003	70,890	2.89%	25,883	2.663
2004	72,645	2.47%	26,532	2.661
2005	74,420	2.44%	27,189	2.659
2006	76,236	2.44%	27,862	2.657
2007	78,115	2.46%	28,559	2.655
2008	80,038	2.46%	29,290	2.653
2009	81,976	2.42%	30,027	2.651
2010	83,946	2.40%	30,774	2.649
2011	85,904	2.33%	31,564	2.643
2012	87,964	2.40%	32,392	2.637
2013	90,125	2.46%	33,263	2.632
2014	92,363	2.48%	34,167	2.626
2015	94,674	2.50%	35,103	2.620
2016	97,081	2.54%	36,079	2.614
2017	99,400	2.39%	37,025	2.609
2018	101,748	2.36%	37,988	2.603
2019	104,112	2.32%	38,961	2.597
2020	106,522	2.31%	39,955	2.592
2021	108,823	2.16%	40,911	2.586

Source: 2004, City of Chilliwack

Languages Spoken

ETHNICITY

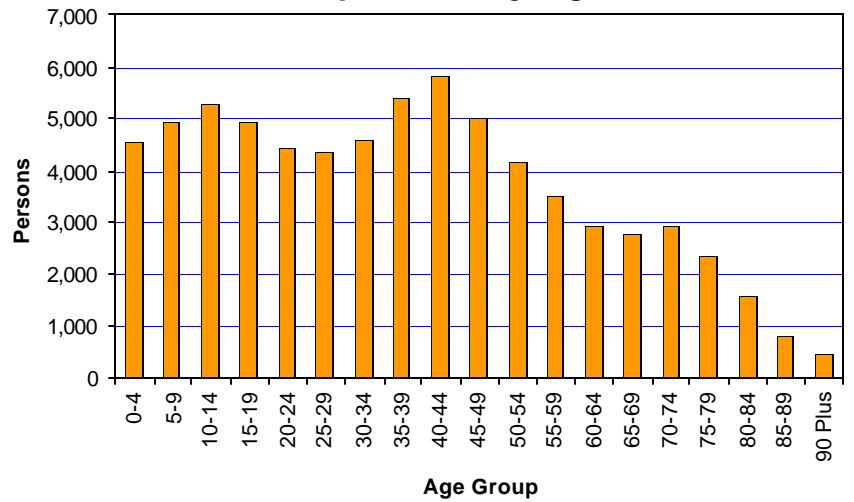
Chilliwack is predominantly an English-speaking community with a value system based in Christianity. However, there is a strong and growing multi-cultural aspect to Chilliwack as more and more immigrants come to the province from Asia, Europe, and other non-European areas. Like the rest of Canada, Chilliwack is a growing cultural mosaic as opposed to the proverbial melting pot. Immigrants are able to maintain their cultural identity and discover micro-communities that speak their native language.

92.76%	English
0.32%	German
0.06%	Dutch
0.10%	French
0.11%	Punjabi
0.17%	Korean
0.09%	Romanian
0.15%	Vietnamese
0.13%	Chinese
0.39%	Other

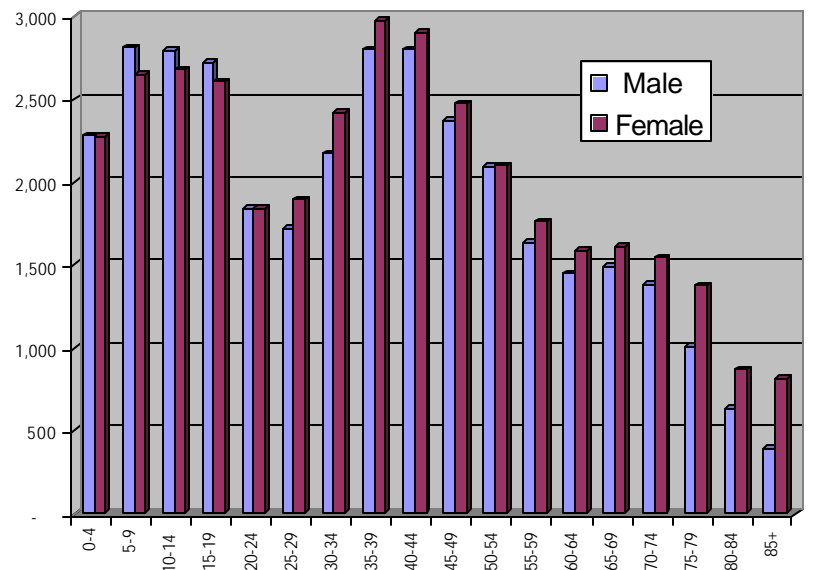
*Note: many respondents listed that they speak more than one language.

Source: Canadian Demographics, Financial Post 2005

Population by Age



Population by Age-Sex



Source: 2004 City of Chilliwack

Households	
2000	24,398
2001	24,767
2002	25,258
2003	25,883
2004	26,532
2005	27,189
2006	27,862
2007	28,559
2008	29,290
2009	30,027
2010	30,774
2011	31,564

Source: 2004 City of Chilliwack

Family Structure

Families in Private Households	Husband-Wife Families	Lone-Parent Families	Avg. No. Persons per Family	Avg. No. Sons/Daughters at Home
20,136	16,820	3,316	3	1.1

Source: Canadian Demographics, Financial Post, 2005

